



Cumberland
Construction
Corporation

9238 Tenmile Creek Dr. Sylvania (Lot 57)

3 Bedrooms - 2 Baths - 1875 SF±

BRIDGECREEK

Affordable Suburban Living
Great Location Sylvania Schools
South off Sylvania Ave., Just West of Mitchaw Rd.

CALL FOR MORE INFORMATION

(419) 535-5697

Ext #1 or #2

(419) 351-5320

or email BBrown@CumberlandConstruction.com
or TBrown@CumberlandConstruction.com

www.CumberlandConstruction.com

This Home Features

Open Plan, Vaulted Ceilings

Gas Fireplace

Granite Countertops

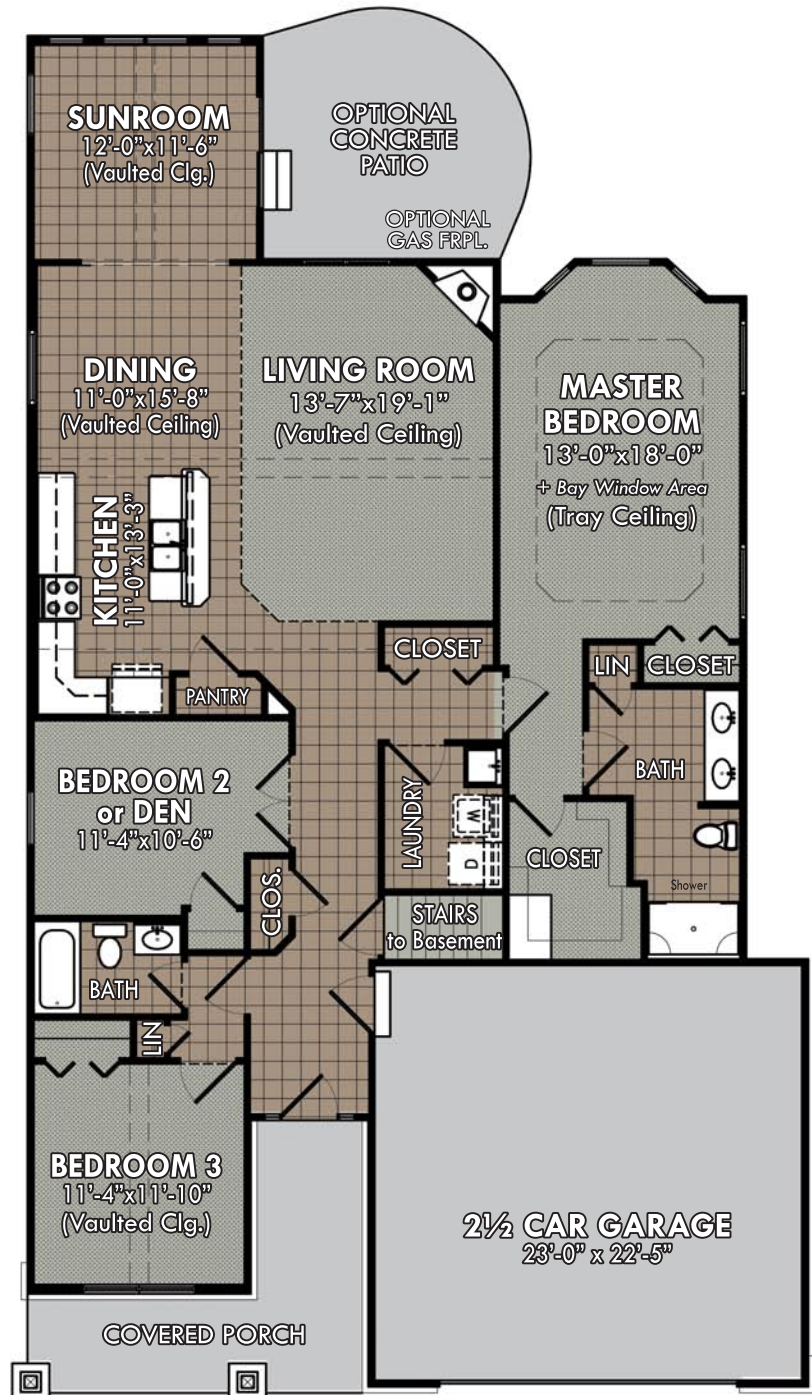
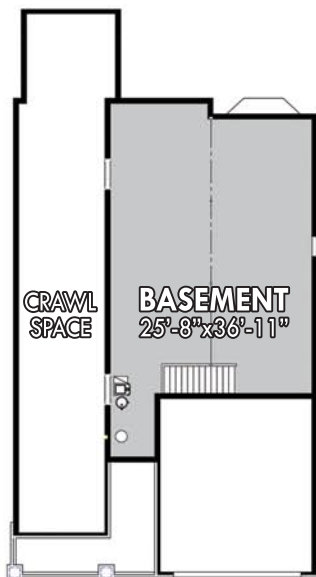
Stainless Steel
Appliances

Basement

Extra Large Garage

CALL FOR PRICING

Pricing & Availability Subject to Change Without Notice.
Sale Price Does Not Include Refrigerator, Clothes Washer, or Dryer



KEY TO FLOOR COVERINGS

(To Indicate Extent Only;
Actual Colors Will Vary)



TILE



CARPET

FIRST FLOOR PLAN

Cumberland Construction Corporation
Building & Developing Locally Since 1968

2727 N. Holland Sylvania Rd., Suite C
Toledo, OH 43615 Tel. (419) 535-5697

Dimensions & Square Footages are Approximate
Actual Colors & Finishes May Vary from This Artist
Rendering, Depending Upon Options Chosen.
This Drawing May Depict Items That Are
Optional and Extra in Cost.

Design/CAD Services by

GREEN LAKE
DESIGN GROUP, LTD.

4/27/18



9238 Tenmile Creek Dr.
Sylvania (Lot 57)
3 Bedrooms 2 Baths 1875 SF±

BRIDGECREEK



SIMILAR HOME PICTURED. 9238 Tenmile Creek Dr. is currently under construction

For More Information, visit

www.CumberlandConstruction.com

or call

(419) 535-5697, Ext #1 or #2 / (419) 351-5320

4.27.18

Design & CAD Services by
GREEN LAKE
DESIGN GROUP, LTD.